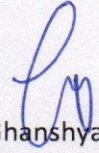


F. No. 1-1/2017-ES.3
Government of India
Ministry of Human Resource Development
Department of Higher Education
External Scholarship Division

PUBLIC NOTICE

Korea Foundation for Advance Studies (KFAS), Korea has announced its International Scholar Exchange Fellowship for the year 2017-18 and invited application from Indian students. The Fellowship is for 6 months or 1 year research projects in collaboration with professors and researchers at leading universities and academic institutions in Korea.

2. The Fellowship is available for university faculty and institution researchers who have a doctoral degree and are below the age of 50.
3. The applicants are required to apply online at www.kfas.or.kr . The deadline for reaching the application along with supporting documents to Korea Foundation for Advance Studies (KFAS) is 24.02.2017.
4. The details of the fellowship is annexed.


(Ghanshyam)

Under Secretary (Scholarship)
Tele: 011 26172492

International Scholar Exchange Fellowship 2017-2018

Korea
Foundation
for Advance
Studies

Korea Foundation for Advanced Studies

Teheran-ro 211, Gangnam-gu, Seoul 06141, Korea

Tel: 82-2-557-5681 Fax: 82-2-557-5684

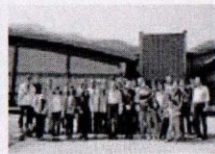
E-mail: isef@kfas.or.kr <http://www.kfas.or.kr>

CONTENTS

International Scholar Exchange Fellowship
2017 - 2018



Orientation for the ISEF Fellows



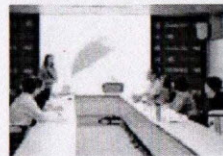
Visit to Afforestation Plant



Cultural Tour



Korean Language Presentation



Korean Language Class



Visit to Industrial Site



Academic Seminar



Farewell Dinner

01.

Introduction to Korea
Foundation for
Advanced Studies _1

02.

International
Scholar Exchange
Fellowship _6

03.

Information of International
Scholar Exchange Fellowship
2017-2018 _8

04.

Application
Instructions _11

Korea Foundation for Advanced Studies

01

Introduction to Korea Foundation for Advanced Studies

International Scholar Exchange Fellowship 2017- 2018

Korea Foundation for Advanced Studies (KFAS) is an independent non-profit organization founded in 1974. KFAS is dedicated to promoting academic development and social progress by funding exceptional students to earn their doctoral degrees overseas at world-renowned universities. In addition, KFAS has created additional programs to expand our academic network and create academic opportunities for the public. KFAS's programs are as follows:

1. SCHOLARSHIP PROGRAMS (FOR KOREAN STUDENTS)

Doctoral Study Abroad Program

The Study Abroad Scholarship program supports exceptional Korean students to pursue their doctorate degrees at top universities abroad and become leaders in their fields, ultimately contributing to social advancement.

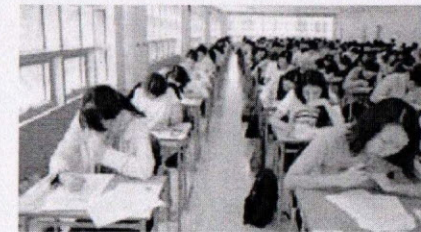
※ Achievements (as of October 2016)

• Ph.D. Recipients and Candidates

Institution	Ph.D. Recipients	Ph.D. Candidates
Harvard University	80	14
Stanford University	77	30
University of Chicago	45	19
Massachusetts Institute of Technology	42	15
University of California, Berkeley	40	26
University of Michigan	41	7
University of Illinois at Urbana-Champaign	29	1
Yale University	26	10
Princeton University	20	5
University of Pennsylvania	22	7
California Institute of Technology	16	3
Columbia University	10	8
Others	238	45
Total	686	190

• Careers of Our Alumni

Professors	449
Other professions	237



Scholarship Program Exam

Undergraduate Student Scholarship Program

The Undergraduate Student Program supports undergraduate students who show great academic potential and strong social commitment to become leaders of the global society.

Classical Chinese Studies Program

The Chinese Classics Program is offered to college students who aim to enhance their proficiency in classical Chinese texts.

Graduate Student Scholarship Program

The Graduate Student Scholarship Program constitutes of the East Asian Studies Graduate Student Program and Electrical Engineering and Computer Science Graduate Student Program.

* Study in China Program

The Study in China Program was established in 2012 to support outstanding Korean Ph.D. candidates at top Chinese institutions who aspire to become China experts.

2. DREAM LECTURE PROGRAM

The Dream Lecture program provides inspirational lectures by KFAS alumni to middle school and high school students. 93 KFAS



Korea-China LEADership Program

alumni who are prominent university professors and researchers have volunteered their services as of now.

3. INTERNATIONAL SCHOLAR EXCHANGE FELLOWSHIP (ISEF) PROGRAM

KFAS invites approximately 50 Asian scholars to Korea every year for six months or one year to conduct research projects in collaboration with professors and researchers at leading universities and academic institutions in Korea. This program is designed not only to support the research of individual scholars, but also to enhance academic mutual understanding and promote cooperation and development in Asia. As of 2016, 838 scholars from 17 countries in Asia and the Middle East have participated in this program. Please refer to page 6 for details about the program.

4. ASIA RESEARCH CENTERS (ARCS)

KFAS has established 17 Asia Research Center at leading academic institutions in China, Mongolia, Thailand, Vietnam, Cambodia, Myanmar, and Laos. The centers provide support for research projects, academic conferences, and publication of research findings.

5. INTERNATIONAL ACADEMIC FORUMS

Beijing Forum

KFAS annually co-hosts the Beijing Forum with Peking University under the overarching theme of "The Harmony of Civilizations and Prosperity for All."

Beijing Forum aims to promote the study of humanities and social sciences around the world. It endeavors to promote academic development and social progress across the world in order to contribute to the development and prosperity of humankind. Beijing Forum strives to promote and safeguard the progress of human society through the peaceful integration of civilizations.

Beijing Forum has been held annually since it was founded in

2004. Beijing Forum has gradually become one of the most influential academic forums attracting renowned scholars and leaders from around the world. As of 2015, over 3,000 presentations have been made at Beijing Forum over the years.

Beijing Forum 2016 was held from November 4 to 6 at the Diaoyutai State Guesthouse and Peking University under the theme of "Different Paths with Common Responsibilities."

Shanghai Forum
KFAS annually co-hosts the Shanghai Forum with Fudan University under the overarching theme of "Economic Globalization and the Choice of Asia," focusing on economics, finance, trade, energy, and the environment. The first forum was held during the Centennial of Fudan University in 2005, and a total of 2,100 presentations have been made so far by participants from 34 countries.

Shanghai Forum boasts an international influence and recognition, and has made a substantial contribution to the status and development of Fudan University. Through the participation of multiple disciplines, in-depth and extensive discussions were made on the critical issues facing the current world and Asia in particular.

Shanghai Forum 2016 was held from May 28 to 30 at the Shanghai International Conference Center and Fudan University under the theme of "Interconnectivity, Integration and Innovation: Building Community of Common Destiny in Asia."

Asian Media Forum

Since 2003, KFAS has annually co-hosted the Asian Media Forum with the Asia Media Research Center of Communication University of China to discuss the latest research in the fields of journalism, communication, media, new technologies, digital con-

ARC Location and Year of Establishment
Beijing Foreign Studies University Beijing, China / 2007
Chinese Academy of Social Sciences Beijing, China / 2002
Communication University of China Beijing, China / 2002
Fudan University Shanghai, China / 2002
Liaoning University Shenyang, China / 2002
Nankai University Tianjin, China / 2004
Peking University Beijing, China / 2002
Renmin University of China Beijing, China / 2003
Tsinghua University Beijing, China / 2002
Yanbian University Yanji, China / 2006
Zhejiang University Hangzhou, China / 2011
Chulalongkorn University Bangkok, Thailand / 2002
National University of Laos Vientiane, Laos / 2002
National University of Mongolia Ulaanbaatar, Mongolia / 2002
Royal Academy of Cambodia Phnom Penh, Cambodia / 2005
Vietnam National University, Hanoi Hanoi, Vietnam / 2002
Yangon University Yangon, Myanmar / 2002



2016 Shanghai Forum

tent, and related policies.

The 12th Asia Media Forum, co-hosted by KFAS and Communication University of China, is scheduled to be held in early 2017.

International Confucian Forum

The International Forum on Confucianism has been co-hosted by KFAS and Renmin University of China since 2004, and discusses critical issues in Confucianism.

From November 22 to 23, 2014, the 11th International Conference on Confucianism took place to address the theme of "Justice and Harmony from the Confucian Perspective" at Renmin University of China.

Tumen River Forum

KFAS and Yanbian University began co-hosting the Tumen River Forum in 2008, inviting scholars and experts from China, South Korea, North Korea, Japan, Russia, and the United States to discuss regional issues such as the development of the Tumen River area. The overarching theme of the forum is "Multicultural Coexistence and Win-win Cooperation."



2015 Tianjin Forum

The 9th Tumen River Forum was held at Yanbian University from October 15 to 16, 2016 under the theme of "Harmony and Inclusiveness: New Pathways to International Cooperation and Exchanges in Tumen River Area."

Northeast Asia Forum

Since 2005, KFAS and Liaoning University have annually co-hosted the Northeast Asia Forum in Shenyang, China, which focuses on building peace and promoting economic growth in the region.

The 2016 Northeast Asia Forum was held from September 23 to 24, 2016 under the theme of "Northeast Asia at a Political and Economic Crossroads."

International Conference on Southeast Asian Cultural Values

The International Conference on Southeast Asian Cultural Values has been co-hosted annually by KFAS and the Royal Academy of Cambodia (RAC) since 2005. Over the years, the conference has focused on the following critical themes: "Preservation and Promotion of Culture" (2005), "Exchange and Cooperation" (2006), "Pro-



2015 Beijing Forum

moting Community Spirit" (2007), "Angkor: a Symbol of Cultural Prestige in Southeast Asia" (2008), "Cultural Industry" (2009), "The Values of Cultural Heritage" (2010), "Culture in High-tech Era" (2011), "Harmony in Multi-culture" (2012), Cultural Diversity and Regional Integration" (2013), "Community of Destiny" (2014) and "Culture-Green Growth and Tourism" (2015).

Tianjin Forum

KFAS and Nankai University co-hosted the first Tianjin Forum on January 16 and 17, 2015 at the Tianjin Guesthouse under the theme of "Urban Development and Governance." Plans are in motion to hold the Tianjin Forum biennially, and the general theme for each event will be selected from topics that have both theoretical value and practical significance concerning the regional development of East Asia or global industrial growth.

Nanjing Forum

KFAS and Nanjing University co-hosted the first Nanjing Forum in 2015 to explore new economic and social opportunities brought forth by the 21st Century Maritime Silk Road, and reflect on Asia-Pacific security and maritime order for regional peace and prosperity.

The inaugural Nanjing Forum was held from October 19 to 21 at the Purple Palace and Nanjing University, under the overarching theme of "Working Together for the 21st-Century Asia-Pacific Peace, Security and Prosperity."

Shandong Forum

KFAS and Shandong University hope to find specific and concrete ways to achieve East Asian integration through the discussion of topics including East Asia's mutual perception, economic cooperation, and social systems. The inaugural Shandong Forum was held from October 21 to 22, 2016 under the theme of "East Asian Community of a Common Destiny—Past, Present, and Future."

6. UNDERSTANDING CHINA

The Korea Foundation for Advanced Studies has been hosting the Understanding China Conferences and China Lecture Series since 2013. The Track I academic programs build on the network that KFAS has accumulated in China through long-term academic exchange. Through these programs, KFAS seeks to provide rich information on China to the Korean public.

Understanding China conference

KFAS hosted the first Understanding China Conference on July 16th, 2013 under the theme of "Xi Jinping Government's Foreign Policy and Social Reform." More than 500 people attended the conference.

The second Understanding China Conference was held on September 24th, 2013 under the theme of "Xi Jinping Government's Economy: Challenge and Forecast." Nine scholars participated in the conference including Chen Yulu, former President of Renmin University of China; Lin Yifu, Professor of Peking University and Senior Vice President of the World Bank; Fan Gang, Director of

China Lecture Series: Invited Lectures by Chinese Scholars

No.	Lecturers and Topics
1	Dr. ZHANG Yunling, Chinese Academy of Social Sciences <i>Analyzing the Xi Jinping Government's Economic Policies</i> Dr. HUANG Weiping, Renmin University of China <i>The Development of China's Capital Markets under the New Normal</i>
2	Dr. ZHANG Yuyan, Chinese Academy of Social Sciences <i>"One Belt and One Road" Strategic Initiative and Economic Prospects for China</i> Dr. FENG Weijiang, Chinese Academy of Social Sciences <i>The Modernization of China's Economic Governance</i>
3	Dr. ZHANG Jun, Fudan University <i>Chinese Economic Slowdown: Causes, the Current State and Prospects</i>
4	Dr. WANG Dong, Peking University <i>Why there is No Northeast Asian Security Architecture?</i> Dr. LI Nan, Chinese Academy of Social Sciences <i>A Renewal of the Great Game in the Korean Peninsula: A Chinese Perspective</i> Dr. SHAO Yuqun, Shanghai Institutes for International Studies <i>Development of China-US Relations and the Taiwan Question</i> Dr. ZHANG Zhexin, Shanghai Institutes for International Studies <i>China's International Strategy & Implications to Asia-Pacific Security Order</i>
5	Dr. LI Bin, Tsinghua University <i>ROK-China Relation in Security Dilemma</i>
6	Dr. ZHAO Tingyang, Chinese Academy of Social Sciences <i>The Tianxia System: 21st Century China's Global Perception and Future Prospects</i>
7	Dr. HAN Dayuan, Renmin University of China
8	Dr. ZUO Xuejin, Shanghai Academy of Social Sciences



Understanding China Conference

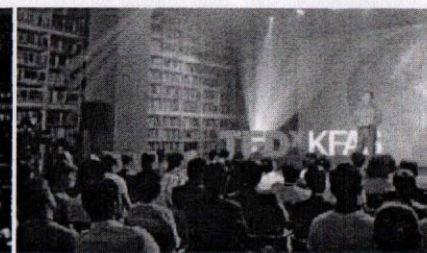
National Economic Research Institute; Zhang Yuyan, Director of the Institute of Asia-Pacific Studies at Chinese Academy of Social Sciences; and Hua Min, Director of the China World Economy Association at Fudan University.

China Lecture Series

From 2013 to 2015, KFAS invited eighteen leading Korean experts on China to KFAS headquarters to give monthly lectures as part of the *China Lecture Series*. Lectures were given on various top-



China-US-ROK Trilateral Conference



TEDxKFAS

ics including Chinese politics, economy, law, society, and history.

KFAS launched *China Lecture Series: Invited Lectures by Chinese Scholars* in 2016 and invited prominent Chinese academics to give lectures. From February to October 2016, eleven Chinese scholars have delivered talks on topics including economics, international politics, and philosophy. KFAS plans to continue to invite Chinese experts on a variety of topics including law, society, history and culture.

7. KOREA-CHINA LEADERSHIP PROGRAM

The Korea-China LEADership Program is an academic exchange program that seeks to foster in-depth mutual understanding and friendship between Korean and Chinese undergraduate and graduate students. The program was launched in 2012 in cooperation with Peking University, Fudan University, Renmin University of China and Tsinghua University. KFAS selects 35 Korean students and 35 Chinese students for the three-week academic exchange program that takes place every August. The aim is to foster the cooperation of future leaders for the enhancement of Korea-China relations through four key activities—Learning, Experience, Argumentation and Discovery.

8. CHINA-US-ROK TRILATERAL CONFERENCE

Since 2014, KFAS, Brookings Institution, and the School of International Studies at Peking University have co-organized three rounds of the Trilateral Conference. China-US-ROK Trilateral Conference is a platform that has been established for renowned scholars to conduct frank dialogue to seek ways to promote progressive relationships between the three countries.

The inaugural Trilateral Conference was held at the KFAS Conference Hall in April 2014. Continuing the deliberations undertaken in Seoul, the second round was held at Brookings Institution in Washington, D.C. in December 2014. Following the previous two rounds, the third round of the Dialogue was held at the School of International Studies at Peking University from October 9 to 10, 2015.

9. KNOWLEDGE SHARING PROGRAMS

KFAS began the Knowledge Sharing Program to provide opportunities to the general public to listen to special lectures from the world's leading scholars and experts.

In March 2015, a special lecture by Professor Shin Gi-Wook of professor at Stanford University was held at the KFAS Conference Hall. In May, Professor Francis Fukuyama of Stanford University and Professor Jeffrey D. Sachs of Columbia University delivered special lectures titled "Is There a Democratic Recession?" and "The Age of Sustainable Development" respectively.

In August, KFAS organized TEDxKFAS, a new platform for knowledge sharing. TEDx events are independently planned and coordinated by universities, communities and private institutes all over the world under a free license granted by TED, whose slogan is "ideas worth spreading".

More than 700 people attended the "TEDxKFAS: Impact on the Future," where renowned experts from different parts of the world shared their insights and ideas on the three topics, "Smart Living", "China in 2025" and "Venture for a Better Future."

10. LIBRARY

The KFAS Library was established in order to provide research materials to KFAS scholarship recipients and ISEF fellows, and to aid the research of scholars in the social sciences, natural sciences, East Asian studies, computer science and electric engineering. The library's collection includes domestic and foreign academic books, journals, scientific society publications, doctoral dissertations, information on leading universities and other study abroad reference materials. Research assistance is also provided for ISEF fellows.

Through the inter-library loan system with Korea Education and Research Information Service (KERIS), Korea Special Library Association (KSLA), and National Digital Science Links (NDSL) offered by the Korea Institute of Science and Technology Information (KISTI), the KFAS Library is able to provide users with materials from hundreds of libraries in Korea and around the world.

International Scholar Exchange Fellowship

International Scholar Exchange Fellowship 2017-2018

The International Scholar Exchange Fellowship (ISEF) program aims to enhance regional academic exchange and cooperation by providing Asian scholars with an opportunity to live in Korea and conduct research for six months or one year. This program was established in 1999, and began supporting scholars the next year.

A total of 838 ISEF fellows have been selected over the last 17 years from Asian countries like Cambodia, China, India, Indonesia, Iran, Iraq, Kazakhstan, Laos, Malaysia, Mongolia, Myanmar, the Philippines, Russia, Thailand, and Vietnam. The 2016-2017 ISEF fellows arrived in Seoul this past August. This cohort consists of 34 scholars from Cambodia, China, Indone-

sia, Laos, Malaysia, Mongolia, Myanmar, Uzbekistan and Vietnam. They have successfully begun conducting their proposed research in collaboration with their host scholars at 15 major universities and research institutions in Korea.

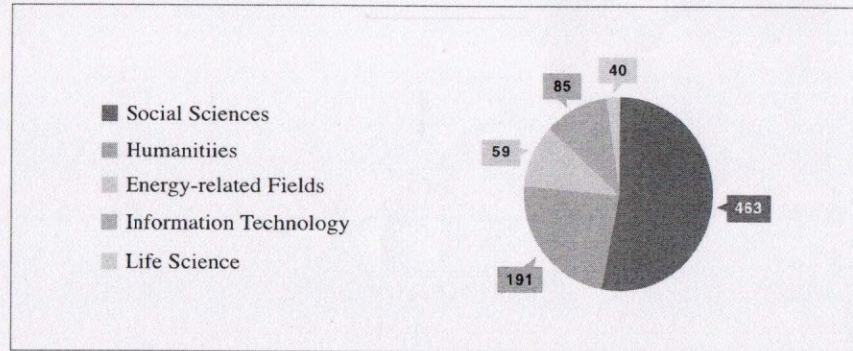
The ISEF program provides outstanding scholars with comprehensive research expenses during their stay in Korea, which include round-trip airfare, initial settlement support, a monthly research stipend, research paper publication support, and accident insurance. During their stay in Korea, fellows enjoy full access to KFAS facilities including the seminar rooms and library to help their research.

KFAS invites prominent scholars from Asia and the Middle



2016-2017 ISEF Fellows in the Conference Hall, upon arrival at KFAS

ISEF Fellows' Demographics (By Research Field)



East in the fields of humanities, social sciences, petrochemical engineering, electrical engineering, electronic science, telecommunications, computer science and life science.

Following the Foundation's tradition of honoring the freedom of scholarship, Scholars are given the freedom to choose their

research topics within these fields.

KFAS also offers Korean language classes and seminars as well as educational trips to cultural sites and industrial facilities to enhance ISEF fellows' understanding of Korea.

ISEF Fellows' Demographics (By Country and Discipline)

Country	Economics	Business	Political Science	Public Administration	Law	Sociology	Education	Psychology	Anthropology	Journalism	Geography	History	Philosophy	Literature	Energy	IT	Life Science	Total
China	68	29	49	18	48	41	17	5	15	29	10	94	62	11	35	56	18	605
Vietnam	5	2	2		1	3	10	1	3	1	6	7	2		2	5	1	51
Mongolia	5	4	2			2			2		2	2			6	13	7	45
Myanmar		1	3		3			3	1		2	4	2		2	7	7	35
Cambodia	1	1	4	2		6	2		8		2	2		1	1	2	1	33
Laos	2					5	8		3		2	1			2		1	24
Thailand			1	1			1	1	1						8		4	17
India							2				1	1			1	1	1	7
Philippines		1					1											2
Indonesia			1	1												1		3
Malaysia	1		1				1											3
Kazakhstan	1		1			1			1									4
Iran				1											1			2
Iraq												1						1
Others	1		2					1							1			6
Total	84	38	66	23	52	58	42	11	34	30	25	113	66	12	59	85	40	838

Information of International Scholar Exchange Fellowship 2017-2018

International Scholar Exchange Fellowship 2017-2018

1. PURPOSE

The ISEF program aims to enhance international exchange and cooperation by promoting cross-cultural understanding and academic advancement. To this end, KFAS invites qualified scholars from Asia and the Middle East to carry out research in collaboration with leading Korean universities and research institutions.

2. FIELDS OF RESEARCH

Humanities and Social Sciences		
• Economics	• Sociology	• Geography
• Business administration	• Education	• Philosophy
• Political science	• Psychology	• History
• Public administration	• Anthropology	• Literature
• Law	• Journalism	
Energy related fields		
• Petrochemical engineering and related fields		
Information Science and Technology		
• Electrical engineering, Electronic science		
• Telecommunications		
• Computer science and related fields		
Life Science		
• Biochemistry, Biotechnology, Ecology, Immunology, Genetic engineering etc.		

* Scholars from other fields are not eligible to apply.

3. ELIGIBLE APPLICANTS

- University faculty and institution researchers from countries in Asia who have a doctoral degree
- Applicants, in principle, must be 50 years old or less.
- Applicants should be able to carry out research in either Eng-

lish or Korean, and they should not have any health issues to hinder their research activities.

- Those not eligible:
 - Persons already conducting research in Korea
 - Persons whose prime interest is to teach in Korea

4. RESEARCH PERIOD

- 1 Year
 - From September 1, 2017 to August 31, 2018
- 6 Months
 - From September 1, 2017 to February 28, 2018
 - From March 1, 2018 to August 31, 2018

5. APPLICATION MATERIALS

- 1) Online Application
- 2) Research Proposal
- 3) 2 letters of recommendation
- 4) Certificate of employment
- 5) Research Sample: 2 books or 2 research papers or 1 book and 1 research paper
 - An English abstract of no more than 300 words must be provided for each book or research paper
- 6) Letter of research affiliation from the host institution in Korea (if available at the time of application)

6. HOW TO SUBMIT APPLICATIONS

- Applicants from institutions where Asia Research Center (ARC) is located must submit the application documents to the center.
- Applicants from institutions without Asia Research Center

(ARC) must submit the application documents directly to KFAS.

7. SELECTION

- 1) Preliminary screening:
 - Preliminary screening by a panel of scholars from the applicant's field of expertise.
- 2) Comprehensive screening:
 - Final decision through comprehensive screening by the Korea Foundation for Advanced Studies Steering Committee. Interviews may be arranged if necessary.

8. APPLICATION DEADLINE

- February 24, 2017
- All original application materials must reach KFAS by the deadline.
- Announcement of results: March 31, 2017

9. DETAILS OF FINANCIAL SUPPORT

- Research Grant
 - Monthly research stipend of 3,000,000 KRW (approximately 2,600 USD)
 - A one-time grant of 1,000,000 KRW after submitting the final research paper at the end of the fellowship
 - If fellows do not enter Korea within one month of the recommended date of entry set by KFAS, the fellowship will become invalid.
- Publication Incentives
 - 2,000~5,000 USD (for an article published in journals registered at SSCI, AHCI, SCI)
 - 1,000 USD (for an article published in journals registered at the National Research Foundation of Korea)
- Publication incentives are provided for articles published within 2 years of the date of the fellow's return to his/her country that indicate the research was funded by the ISEF program at KFAS. The amount of incentives may vary upon careful evaluation of the journal's influence and the writer's level of contribution.
- Initial settlement support
 - A one-time payment of 1,000,000 KRW
- Round trip airfare
 - Economy-class round trip airfare between the airport nearest to the fel-

low's place of residence and Seoul

- Medical insurance
 - National health insurance upon request
 - Accident insurance
- Research expenses for the International Scholar Exchange Fellowship Program are provided directly to the fellows, and not to home institutions or hosting institutions.

10. RESEARCH SUPPORT PROGRAM

- Library Access
 - ISEF fellows have access to the KFAS library for books and reference materials necessary for the stated research projects.
- Use of Facilities
 - The KFAS seminar room, lecture rooms, and other academic resources will be made available for academic events related to the stated research projects. Reservations are necessary to secure use of the facilities.
- Korean Language Class
 - KFAS holds Korean classes for the fellows to better understand the Korean people and society during their stay. The classes are offered from September to July of the following year. In August, there is a Korean presentation for the fellows.
- Cultural Tours
 - Cultural tours are provided twice during the year of research. Fellows will visit major Korean cities and cultural areas to learn about Korean history and traditions.
- Industrial Site Visits
 - Visits to prominent industrial sites and research centers will provide ISEF fellows with an opportunity to learn about the industrial development of Korea.

11. PRESENTATION OF RESEARCH REPORT

- Interim progress reports



SK Energy Ulsan Complex Visit

Asia Research Center Contact Information

<p>CHINA</p> <p>Beijing Foreign Studies University Information Center for Worldwide Asia Research 2 North Xisanhuan Avenue Beijing 10089, China T. 86-10-88813845 E. icwar@bfsu.edu.cn</p> <p>Chinese Academy of Social Sciences Asia Research Center International Cooperation Bureau No. 5 Jianguomennei Dajie Beijing 100732, China T. 86-10-85195139, 6143 E. zhouty@css.org.cn</p> <p>Communication University of China Asia Media Research Center No. 1, East Street, Dingfuzhuang Chaoyang District, Beijing 100024, China T. 86-10-65779492 E. amc@cuc.edu.cn, lixxx@cuc.edu.cn</p> <p>Fudan University Asia Research Center Guanghua Building 603 Sub-East Section 220 Handan Road, Shanghai 200433, China T. 86-21-65642717 E. jingguangyao@fudan.edu.cn, arcfd@fudan.edu.cn</p> <p>Liaoning University Asia Research Center No. 66 Chongshan Zhong Road, Huanggu District, Shenyang, Liaoning 110036, China T. 86-24-62202235 E. arcinu@lnu.edu.cn</p> <p>Nankai University Asia Research Center No. 444, Zhou Enlai School of Government, Nankai University, No. 38 Tongyan Road, Haibe River Education Park, Tianjin, China T. 86-22-23500327 E. amk@nankai.edu.cn</p> <p>Peking University Asia Pacific Research Institute RM.216, 1st Courtyard, Beijing 100871, China T. 86-10-62756800 E. apri@pku.edu.cn</p> <p>Renmin University of China Asia Research Center, International Office No. 59 Zhongguancun Street Haidian District, Beijing 100872, China T. 86-10-62515293 E. hanfei@ruc.edu.cn</p> <p>Tsinghua University Asia Research Center Wenxidou 107, Beijing 100084, China T. 86-10-62792578, 62772802 E. jysbgs@mail.tsinghua.edu.cn, liyue@mail.tsinghua.edu.cn</p>	<p>Yanbian University Asia Research Center No.977 Gongyuan Road Yanji, Jilin 133002, China T. 86-433-2732181, 2436506 E. ybxu@ybu.edu.cn</p> <p>Zhejiang University Asia Research Center No.48, Tianmushan Road Hangzhou, Zhejiang 310028, China T. 86-571-88273077 E. jinjianren@hotmail.com, backsh32@163.com</p>
<p>CAMBODIA</p> <p>Royal Academy of Cambodia Asia Research Center Russian Federation Blvd., P.O.Box 553 Phnom Penh, Cambodia T. 855-23-890180 E. arc_racademy@yahoo.com</p>	
<p>LAOS</p> <p>National University of Laos Asia Research Center Dongdok Campus, POB 7322 Vientiane, Lao PDR T. 856-21-740283 E. nuol-arc@nuol.edu.la, bouadam06@yahoo.com</p>	
<p>MONGOLIA</p> <p>National University of Mongolia Asia Research Center Room 213A, 1st building, Ikh Surguulinn gudamj-1, Baga Toiruu, Sukhbaatar district, Ulaanbaatar, Mongolia POB 46A-523 T. 976-11-322568, 320159 E. research@num.edu.mn</p>	
<p>MYANMAR</p> <p>Yangon University Asia Research Center Convocation Road, Kamaryut Township Yangon 11041 Union of Myanmar T. 951-531486, 502078 E. drkyawnaing2009@gmail.com</p>	
<p>THAILAND</p> <p>Chulalongkorn University Asia Research Center Room 204, Janjuri 1 Bldg., 2nd Floor Phyathai Road, Pathumwan Bangkok 10330 Thailand T. 662-2183203 E. arc_kfas@chula.ac.th</p>	
<p>VIETNAM</p> <p>Vietnam National University, Hanoi Asia Research Center Room No. 504, 5th Fl., Headquarter Bld. 144 Xuan Thuy Rd., Cau Giay District Hanoi, Vietnam T. 844-37547987 E. arc@vnu.edu.vn</p>	



First Cultural Tour for 2015-2016 ISEF Fellows

Fellows are required to submit progress reports on the proposed research project on November 15, 2017 and February 15 and May 15, 2018.

- Final research paper
Fellows are required to submit a final research paper based on the research they conducted during the fellowship period by February 15 or August 15, 2018. The papers should use international standard formatting for academic papers.

12. OBLIGATIONS

- Fellows shall devote themselves to their research project without committing to any type outside employment.
- Fellows may participate in activities within the limits permitted by their visa status.
- Fellows shall not violate any Korean law during the fellowship period.
- Fellows shall not receive any other financial support than that provided by the ISEF Program.
- Fellows shall reside in Korea for the fellowship period, and will not leave Korea temporarily at his/her discretion without prior approval by KFAS.
- Fellows shall return to his/her home country after the fellowship period expires.
- Failure to comply with the aforementioned regulations specified as "Obligations" may result in disadvantages or expulsion from the ISEF Program.

04

Application Instructions

International Scholar Exchange Fellowship 2017-2018

HOW TO APPLY

Please carefully read the following instructions before applying online.

• Online Application Steps

1. Confirm eligibility
2. Become a KFAS member and log in at www.kfas.or.kr
3. Complete the online application by filling out the necessary information, writing the research proposal, and attaching the applicable files
4. Submit the supplementary documents (2 recommendation letters, 2 research samples, a certificate of employment)
5. Confirm submission

1. BEFORE APPLYING



International Conference Commemorating 20 Years of Korea-China Diplomatic Relations

Special Lecture by Prof. Jeffrey D. Sachs

2. ONLINE APPLICATION

1) Complete the application form

- At the main page of the KFAS website (www.kfas.or.kr), click "ISEF Application" at the bottom of main page. You may also go to "International Program," and then go to "ISEF" to click "ISEF Application."
- The ISEF Application section of the website is made of three pages: Personal Information, Academic Information, and Additional Information. You may save the entered information only after completing each page. You cannot save an incomplete page. After saving all three pages, the application form is complete.
- All items must be entered in English. For Chinese applicants, Chinese may be entered in some cases, but always along with English.
- Required fields (marked with a red dot) must be entered in order to move to the next item.
- The ARC that applies to you must be selected at the middle of the Personal Information page. Applicants from institutions where Asia Research Center (ARC) is located must select his/her home institution. Applicants from institutions without Asia Research Center (ARC) must select "Korea." (Please refer to page 2 for institutions with ARCs).
- If you apply without indicating the applicable ARC, the application will not be considered for evaluation.
- Every question must be answered completely and carefully.
- After completing the application form, you may temporarily save the entered information and return later to make corrections by logging in and checking the information at My Page. After you make your final submission, you will not be able to change any of the entered information.

2) Write your research proposal and attach documents

- Research proposals should be attached as a doc, docx, pdf, or ppt file. The file name should be your full name (e.g. Wang Lei.doc).
- Research proposals must be a minimum of four single-spaced A4 pages, and use Times New Roman, 12 point font.
- At the beginning of your proposal, please indicate your full name, affiliation, field of research, and proposed research topic.
- Research proposals should include the following items:
 - **Motivation and need for this project:** Be specific about your specialized academic interest within your field.
 - **Background:** Place your research

project in an academic context by referencing major works by other scholars in this field. A selected bibliography may be attached in order to specify the background of your proposed project. Also describe how your proposed research plan is related to your previous study/research, and fits your future academic goals.

- **Objectives:** Write a clear and detailed description of your proposed research objectives.
- **Scope, design and methodology:** Describe the scope, design and methodology of your proposed research project.
- **Schedule:** Explain how your project can be completed within the duration of this fellowship.
- **Significance:** Explain the significance of your proposed project for your academic field, your own professional development and your home country.
- **Dissemination plan:** Describe your plans for disseminating your research findings in both your home country and elsewhere.
- **Publications:** Include a complete list of your publications, translated into English. You should use the standard citation and bibliographical format.

3) Attach your photo

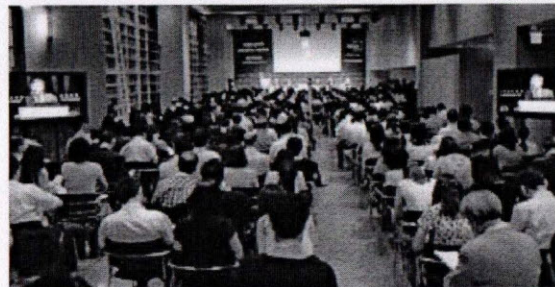
- Please attach a recent photograph (e.g. passport photo).

3. SUBMIT SUPPLEMENTARY DOCUMENTS

- After completing the online application form, you must submit 2 recommendation letters, 2 research samples, a certificate of employment, and a letter of research affiliation (if applicable) to KFAS by post. If your home institution has an ARC, you must submit the documents to the applicable ARC. After an initial screening at your ARC, ARCs will send the documents of qualified candidates to KFAS.

1) Recommendation Letters

- An application to the ISEF program requires 2 recommen-



KFAS Conference Hall



Academic seminars by ISEF fellows

and involvement in your research before arriving in Korea. You may download the form at the KFAS homepage. ("Community" → "Download" → "Letter of Recommendation.doc")

- Please follow the instructions on the recommendation form. At least one recommendation should come from a source not affiliated with your institution.
- Recommenders should be in a position to comment on your abilities and qualifications to carry out the stated research project in Korea and its value in relation your research and teaching responsibilities in your country.
- If a recommender is Korean, he/she may write in Korean and submit his/her recommendation letter directly to KFAS.

2) Research Sample

- 2 research samples that best represent your work (i.e. books or research papers) must be submitted. An English abstract of no longer than 300 words must be attached to each research sample.

3) Certificate of Employment

4. HOST INSTITUTION IN KOREA

- If available, please attach a letter of research affiliation from your host institution in Korea to your application. You may download the form at the KFAS homepage. ("Community" → "Download" → "Letter of Research Affiliation.doc")
- Upon selection as an ISEF fellow, you must contact Korean institutions and scholars immediately to arrange your

research affiliation. You should send KFAS a letter of research affiliation as soon as your arrangements are made.

- Fellows should find their own host scholar as they best understand their field of study and research proposal. It is also best for fellows and host scholars to contact each other directly for active cooperation and exchange during the research period. You are also advised to inquire whether the institution's accommodations, such as dormitories or apartments, are available for use. You must thoroughly discuss each other's role

and involvement in your research before arriving in Korea.

5. CONFIRM SUBMISSION OF APPLICATION

- After submitting your application form, you may check whether all materials were received at My Page.
- ISEF Fellows will be announced on March 31, 2017. You may also check My Page for results.

6. IMPORTANT NOTICE

- 1) All documents must reach KFAS by the application deadline in order to be considered for the following academic year, which begins in September.
- 2) All communication, including questions about your application, should be sent to the ARC in the applicant's respective country or to KFAS.
- 3) If an application form is not completely filled out and/or is not accompanied by proper documents, the applicant may be rejected without notice.
- 4) No submitted documents will be returned to applicants.
- 5) Accepted ISEF fellows may have their acceptance rescinded if he/she is found to have provided incorrect information.